

## Broadband Light Source

# ASE Source Module

## OFB-Bx2 Series

The LiComm OFB-Bx2 series have been designed to provide very stable output power using the ASE (Amplified Spontaneous Emission) of Erbium Doped

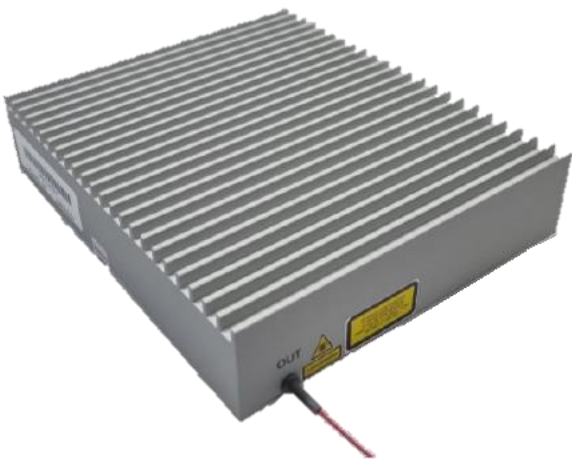
Fiber. The OFB-Bx2 series offer provide very stable optical output power over a wide operating temperature range, with significantly low er power consumption. They are internally supported with output isolator for system stability and optimum performance. This includes photodiodes for monitoring the optical output power through tap couplers. The OFB-Bx2 series offer versatile functions. Operational mode selection (ALC, FLS) are controlled by RS232.

### Features

- High saturation output power up to 22dBm
- Very stable output power over a wide temperature range
- Compact size (140 x 120 x 27 mm)
- Serial communication interface
- +5V single power supply
- Low power consumption
- LV TTL compatible output alarms
- Automatic Output Level Control (ALC)

### Applications

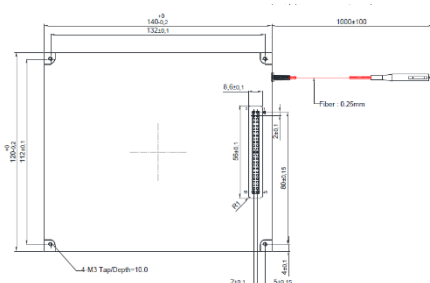
- Optical communication system
- Optical measurement system
- Optical sensing system
- Optical component spectral test
- System compliance test
- Optical fiber characterization test



## Broadband Light Source

# ASE Source Module

### Mechanical Dimension (140 X 120 X 27 mm)



### Optical Characteristics

Parameter	Symbol	C-band	L-band	F-band	Unit
Wavelength Range	$\lambda$	1528.4 ~ 1566.9	1570.3 ~ 1610.9	C+L	nm
Total output power	$P_{OUT}$	23	23	22	dBm
Output power stability <sup>(1)</sup>	PS		0.3		dB
Spectral power stability <sup>(2)</sup>	SS		0.2		dB
Spectrum flatness <sup>(3)</sup>	SF		Max. 3.5		dB
Output isolation	ISO		Min. 20		dB

(1) Temperature fluctuation :  $\pm 3$  °C, after warming

(2) Temperature fluctuation :  $\pm 3$  °C, after warming

(3) @Max. Total Output, Bandwidth : C-band=38.5 nm, L-band=40.5nm, F-band=79nm

### Electric & Environmental Characteristics

Parameter	Typical Value
Power supply voltage	5 V
Interface	RS232
Alarm	LVTTL
Operating temperature*	-5 ~ 60 °C
Storage temperature	-40 ~ 75 °C
Storage humidity	5 ~ 95 % R.H
Power consumption	37.5 W

\*Min. wind speed : 2m/s

### Ordering Information (Example: OFB-BFB-23AP, 23dBm output power C+L-band Flat Spectrum BLS with APC Control)

O	F	B	-	B	F	2	-	22AP
		BLS		B: with GFF A: w/o GFF	C: C-band L: L-band F: C+L-band	Module Type		22AP: 22dBm Pout with ALC

### LiComm Co., Ltd.

#### Address

109, Baekja-ro Idong-eup, Cheoin-gu, Yongin-Si,  
Gyeonggi-Do, 17126, Korea

Tel: +82-31-323-1926

Fax: +82-31-323-2447

E-mail: sales@licomm.com

Website : www.licomm.com