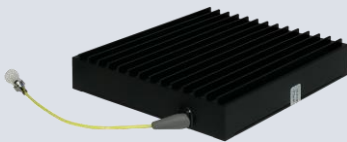


1550nm Fiber Laser

Pulsed Fiber Laser OHL-NCC Series

Compact & High Average Power

OHL-NCC-01AC-E



The LiComm OHL-NCC series is a 1550nm Pulsed Fiber Laser Module with a driving and control circuitry packaged inside. The OHL-NCC series offers a high Beam quality and very stable output power. Compact size, combined with extremely low power consumption, allows the OHL-NCC series to be highly suitable for applications such as LiDAR , Range finding, Remote sensing and more.

Features

- Compact size
- Extremely low power consumption over wide operating temperature range
- Laser module including electric control circuit
- High output pulse energy
- Single mode beam quality
- APC (Automatic Power Control) or ACC (Automatic Current Control)
- Control & monitor by RS232
- TTL alarm
- Single voltage power supply

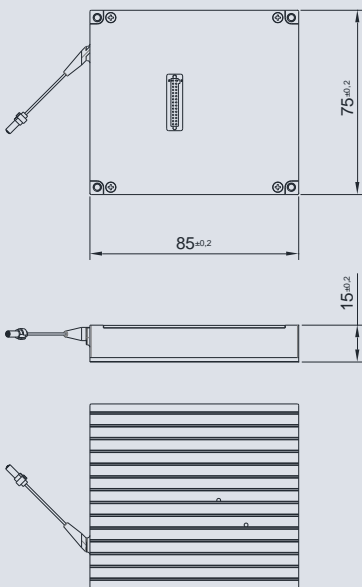
Applications

- LiDAR
- Range finding
- Distributed fiber sensing

1550nm Fiber Laser Pulsed Fiber Laser

Mechanical Dimension

OHL-NCC-01AC-E : 85 x 75 x 15 mm



Optical Characteristics

Parameter	Symbol	OHL-NCC-01AC-E	Unit
Laser Wavelength	λ	1550 ± 1	nm
Laser Output Energy	P_{OUT}	up to 50*	uJ
Peak Power	P_{PEAK}	5	kW
Average Output Power	P_{AVR}	1.25	W
Laser Pulse Width	P_{WD}	1 ~ 10	ns
Beam Quality	M^2	< 1.2	-
Trigger Mode	-	External (TTL/LVDS)	-
Repetition Rate	R	25k ~ 2M	Hz
Output Power Stability	P_{STA}	Max. 3	%
Power consumption	-	20	W

*: Repetition Rate 25kHz

Electrical & Environmental Characteristics

Parameter	Typical Value
Power supply voltage	+5V
Interface	RS232
Alarm	TTL
Operating temperature	-35 ~ 65°C
Storage temperature	-40 ~ 85°C
Storage humidity	5 ~ 90% R.H

Ordering Information

OHL - NCC - XX₁XX₂ - X₃

X₃ Trigger Mode
External (E) / Internal (I)

XX₂ : AP(APC), AC(ACC)

XX₁ : Max. Average Power (W)

LiComm Co., Ltd.

Address

109, Baekja-ro Idong-myeon, Cheoin-gu, Yongin-Si,
Gyeonggi-Do, 17126, Korea

Tel: +82-31-323-1926,1936 Fax: +82-31-323-2447

E-mail: sales@licomm.com Website : www.licomm.com